

FREE



NewcastleGateshead
world-class culture

WHAT'S ON

A guide to events in NewcastleGateshead, Sunderland,
South Tyneside and North Tyneside Jan - Mar 2010



ILLUMINATING HADRIAN'S WALL

A celebration of the frontier
of the Roman Empire

SOUTH TYNESIDE MAGIC FESTIVAL

Prepare to be mesmerised by the
finest magicians from around the world

+ EXHIBITIONS, PERFORMANCE, MUSIC
& FAMILY EVENTS ACROSS TYNE & WEAR

NewcastleGateshead.com

north east
england



Get Out & Active

**NewcastleGateshead • Sunderland •
South Tyneside • North Tyneside**

Go surfing, try indoor climbing, build a sandcastle, take up cycling, walk in an 18th-century landscape garden, or swim in an Olympic-sized pool.

If you're looking to try something new or for things to do away from the hustle and bustle of the city, then there are plenty of reasons to Get Out & Active.

Visit www.getoutandactive.com to find out more and for the chance **to win a pair of Specialized mountain bikes!**

CONTENTS



MAMMA MIA!



HADRIAN'S WALL



JAZZ FESTIVAL



AV FESTIVAL 10



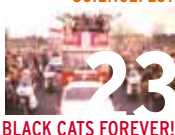
10K ROAD RACE



NORTHERN LIGHTS



SCIENCEFEST



BLACK CATS FOREVER!



MAGIC FESTIVAL

KEY

£ PRICES APPLY

M NEAREST METRO**Q** NEAREST QUAYLINK

EVENTS AT VENUES
FEATURED ON THE MAP
(SEE CENTRE PAGES)
ALSO INCLUDE A MAP
REFERENCE.

HELLO

With fantastic special events taking place and a wealth of places to visit and things to do, Tyne & Wear is always an exciting place to be. Highlights in the coming months include *MAMMA MIA!*, the world's best-loved musical; plus festivals galore, with the *Gateshead International Jazz Festival*, *Illuminating Hadrian's Wall*, *Newcastle ScienceFest*, *AV Festival 10*, *South Tyneside International Magic Festival* and *Northern Lights Film Festival!* Don't forget to tell your friends and family about everything we have going on and encourage them to visit to see it all for themselves. Go to NewcastleGateshead.com for special offers on accommodation in the area.

6 FAMILY

9 FESTIVALS & EVENTS

14 WHAT'S NEW?

16 NewcastleGateshead MAP

18 PERFORMANCE

24 MUSIC

27 EXHIBITIONS

30 LISTINGS

32 COMPETITION AND OFFERS

If you have an event that you would like featured in future editions email: ngi@ngi.org.uk

Published in partnership with Tourism Tyne & Wear by: NewcastleGateshead Initiative, 4th Floor, Central Square South, Orchard Street, Newcastle, NE1 3AZ.

Designed by: blueriver.co.uk

While every care has been taken in the accuracy of producing this guide, the publisher is not liable for any errors or omissions which may inadvertently occur. All information in this publication is subject to change. Details are correct at time of going to print - December 2009. Thanks go to all organisations who supplied information and photographs.

THE PERFECT CHRISTMAS TREAT

BENNY ANDERSSON & BJÖRN ULVÆUS'

MAMMA MIA!

THE SMASH HIT MUSICAL BASED ON THE SONGS OF ABBA®

Image: Littlestar

until Sun 17 Jan

£

Metro Radio Arena
Arena Way
Newcastle
0844 493 6666 / 4567
metroradioarena.co.uk

M CENTRAL STATION

Q Q1 CENTRAL STATION
MAP REF A6

Don't miss the last chance to see *MAMMA MIA!* the global smash hit musical on its first visit to NewcastleGateshead.

Inspired by the story-telling magic of ABBA's timeless songs, this enchanting tale of family and friendship unfolds on a Greek island paradise. On the eve of her wedding, a daughter's quest to discover the identity of her father brings three men from her mother's past back to the island they last visited 20 years ago...

With music and lyrics by Benny Andersson and Björn Ulvaeus, *MAMMA MIA!* is written by Catherine Johnson, directed by Phyllida Lloyd and choreographed by Anthony Van Laast. It's the perfect festive treat!

Illuminating

Hadrian's Wall

A line of light from coast to coast

Sat 13 Mar
5pm - 7pm
FREE

Various locations along the Hadrian's Wall Path National Trail from Wallsend to Carlisle and Bowness-on-Solway
01434 322 002
illuminatinghadrianswall.com

M WALLSEND



Part of North East England's world-class programme of festivals and events developed by culture¹⁰

This once-in-a-lifetime event will illuminate Hadrian's Wall from end to end to form an amazing line of light from coast to coast.

It will create an iconic celebration of the landscape and heritage and show the true scale and majesty of Hadrian's Wall along the route of the 84 mile long Hadrian's Wall Path National Trail.

An illuminating event at Wallsend will ignite the first of approximately 500 points of light, placed at 250m intervals from Wallsend along the Newcastle Quayside and out into Hadrian's Wall Country to Carlisle and Bowness-on-Solway. There will be a limited number of ticketed points along Hadrian's Wall where people will be able to view the line of light (tickets pre-booked in advance only) and Carlisle will also host a magnificent *Welcoming the Light* event. Visit illuminatinghadrianswall.com for more information about transport links along Hadrian's Wall and the events taking place.

Illuminating Hadrian's Wall is an ambitious project led by Hadrian's Wall Heritage Ltd which forms part of North East England's world-class programme of festivals and events developed by culture¹⁰ in partnership with Lakes Alive.



FAMILY

throughout Jan,
Feb & Mar

£

Arbeia Roman Fort
Baring Street
South Shields
0191 456 1369
twmuseums.org.uk/arbeia

M SOUTH SHIELDS



TIMEQUEST

Children can become archaeologists for the day with Arbeia Roman Fort's special *TimeQuest* exhibition. They can dig for finds on a reconstructed excavation site, piece together pottery and have a go at writing just as the Romans would have done. Plus, look out for Arbeia's programme of events, including slithering snake-handling sessions, Roman re-enactors and much more!

Sat 9 - Sun 17 Jan

£

Blue Reef Aquarium
Grand Parade
Tynemouth
0191 258 1031
bluereefaquarium.co.uk

M CULLERCOATS



FISH STOCK-TAKING

Blue Reef is having its annual stock-take and everyone is invited along to help with the 'fishy census!' Visitors can help spot and record the number of certain species including seahorses, sharks, octopus and lionfish. The experts at Blue Reef will then do an official check and the child who most accurately reports the population of each of the above animals will win a year's free membership for their family!

Sat 13 - Sun 21 Feb

£

Life Science Centre
Times Square
Newcastle
0191 243 8210
life.org.uk

M CENTRAL STATION

Q Q1 CENTRAL STATION
MAP REF A5



HALF TERM FUN AT LIFE SLIME WORKSHOPS

Get stuck into some slimy fun with Life Science Centre's science explainers and learn how to make the perfect slime!

Sat 13 Feb - Winter '10

£

Seven Stories, the Centre
for Children's Books
Ouseburn Valley
Newcastle
0845 271 0777
sevenstories.org.uk

M MANORS

Q Q2 OUSEBURN
MAP REF G3



GREEN DROPS AND MOONSQUIRTERS

A major new exhibition that brings to life the work of award-winning children's author and illustrator Lauren Child. Lauren's books have been captivating children and their parents for almost 10 years, including *Charlie and Lola*, *Clarice Bean* and *Hubert Horatio Bartle Bobton-Trent*. Over forty original illustrations are coupled with fun and engaging hands-on activities for all the family!

Illustration © Lauren Child

Mon 15 - Fri 19 Feb

£

Bede's World
Church Bank
Jarrow
0191 489 2106
bedesworld.co.uk

M BEDE**DRAGONS OF THE DARK AGES**

Head along to Bede's World during February half term, between 11am and 3pm, and learn all about the dragons that rampaged in the Dark Ages. Hear the dragon stories of Anglo-Saxon England and make your own dragon out of clay to take home. Activity is included in the admission price to the museum.

Tues 23 - Sat 27 Feb

£

PLAYHOUSE Whitley Bay
Marine Avenue
Whitley Bay
0844 277 2771
playhousewhitleybay.co.uk

M WHITLEY BAY**GEORGE'S MARVELLOUS MEDICINE**

BY ROALD DAHL

PLAYHOUSE Whitley Bay presents Roald Dahl's amazing story about George Kranky, a small boy who lives on a farm with his mother, father and grandmother. George is fed up with his grandma's selfishness, grumpiness and terrifying temper, so he creates a medicine to cure her, with marvellous consequences...

Tues 2 Mar

£

Life Science Centre
Times Square
Newcastle
0191 243 8210
life.org.uk

M CENTRAL STATION**Q** 01 CENTRAL STATION
MAP REF A5**PRE-SCHOOL DAY AT LIFE**

Let your little ones explore science in this fun-filled day of activities designed especially for under 5s. The theme for the day will be My Body and youngsters can enjoy lots of hands-on science activities to help them understand how our bodies work. Other activities include mini beast handling, water tables, soft play and a toddler disco.

Sun 21 Mar

£

Seven Stories, the Centre
for Children's Books
Ouseburn Valley
Newcastle
0845 271 0777
sevenstories.org.uk

M MANORS**Q** 02 OUSEBURN
MAP REF G3**HORRIBLE SCIENCE**

WITH NICK ARNOLD

As part of the Newcastle ScienceFest (see p22), head to Seven Stories to meet *Horrible Science* author Nick Arnold in an event that promises to go off with a bang! Prepare for a weird and wonderful look at the world of science, complete with demonstrations, and plenty of opportunities to join in and get your hands dirty.

Gateshead International Jazz Festival

Fri 26 - Sun 28 Mar

£

The Sage Gateshead
St Mary's Square
Gateshead

To book tickets
and for further
information contact
The Sage Gateshead
Ticket Office on
0191 443 4661 or visit
thesagegateshead.org

M GATESHEAD
Q Q1 THE SAGE GATESHEAD
MAP REF E5

Gateshead International Jazz Festival brings together as wide a range of artists and influences as possible to include under the umbrella title 'jazz' at The Sage Gateshead.

In just one weekend Abdullah Ibrahim, Stan Tracey, the Scottish National Jazz Orchestra, Jerry Dammers' Spatial A.K.A. Orchestra, Gwilym Simcock, Dan Berglund, Brass Jaw, Shri and Arun Ghosh Band and Gwyneth Herbert are just a few of the artists to be performing at the sixth festival, which has rapidly gained a reputation as one of the jewels on the UK jazz festival scene.

The festival will offer a packed programme of performances, pre-concert talks, DJ sets and family events with many performers at the festival also leading workshops and masterclasses.

This festival is a chance to enjoy as wide a range of music as possible in world-class performance spaces under one spectacular roof over one weekend.



Photo: William Ellis

until Sun 21 Feb

£

Times Square
Newcastle
0191 243 8210
life.org.uk

M CENTRAL STATION

Q 01 CENTRAL STATION
MAP REF A5



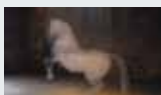
SKATING @ LIFE!

Get set for some winter fun with a whirl on Life's open-air ice rink. Fun for all the family - from the wobbly novice to Torvil and Dean wannabes!

until March

£

Belsay Hall, Castle
and Gardens
Nr Ponteland
Northumberland
01661 881 636
english-heritage.org.uk



FAREWELL TO LUCKY SPOT

Designer Stella McCartney's stunning crystal horse, *Lucky Spot*, will soon be leaving its home at Belsay Hall, Castle and Gardens. Each strand of the 8,000 Swarovski crystals has been individually hung from the rafters of Belsay's medieval castle so that, when complete, the overall form is a huge leaping horse. Don't miss the last chance to see this spectacular installation.

Sat 9 Jan - Fri 19 Feb

FREE

The Alnwick Garden
Denwick Lane
Alnwick
Northumberland
01665 511 350
alnwickgarden.com



INSPIRE NORTHUMBERLAND EXPERIMENTS IN FASHION

An exhibition at The Alnwick Garden. Young designers, aged 15 - 25 years, were supported by tutors from London College of Fashion and international designer Wayne Hemingway, to create innovative designs inspired by the landscape and architecture of six market towns of Northumberland - Alnwick, Amble, Berwick, Haltwhistle, Seahouses and Wooler.

Sun 10 Jan

FREE

Roker Pier to
South Shields Pier
0191 424 7498
visitsouthtyneside.co.uk

M ST PETER'S /
SOUTH SHIELDS



PIER TO PIER NEW YEAR WALK

A refreshing 8-mile walk along the spectacular coastline from Roker Pier to South Shields Pier. Transport is provided to the start, meeting at Littlehaven Beach car park at 9am or Pier View car park in Sunderland at 9.30am. Pre-booking is essential.

FESTIVALS & EVENTS

Fri 22 - Sun 31 Jan

FREE

Mowbray Park and
Sunniside Gardens
www.sunderlandevents.com

M SUNDERLAND



SHINE 2010 ARTS FESTIVAL

Entitled the Urban Garden, the exciting FREE festival will transform venues across Sunderland, including Mowbray Park and Sunniside Gardens, using dramatic night-time lighting installations and giant art projected onto buildings and pavements. Visitors will be invited to take part in guerrilla lighting 'happenings' throughout the week which will see the Sunderland Museum and Winter Gardens bathed in light and sound to create a magical visitor experience.

Sat 13 - Sat 20 Feb

FREE

Eldon Square
Newcastle
eldon-square.co.uk

M HAYMARKET

Q Q2 MONUMENT
MAP REF C2



ELDON SQUARE FESTIVAL

A week-long festival of entertainment showcasing fashion, food and drink, music, children's activities and celebrity appearances, will create a carnival atmosphere in the city to celebrate the launch of the new mall at Eldon Square - St Andrew's Way (see p14). The official launch is on Tuesday 16 February.

Sun 14 Feb

FREE

Stowell Street, Bath
Lane, Charlotte Square
and Waterloo Street
Newcastle
[chroniclelive.co.uk/
chinesenewyear](http://chroniclelive.co.uk/chinesenewyear)

M MONUMENT / ST JAMES
MAP REF B3



CHINESE NEW YEAR

Food, entertainment and fun for the whole family - Chinese New Year celebrations in Newcastle promise all this and more! Chinese New Year 2010 will explode into life on Sunday 14 February when, against a soundtrack of Chinese firecrackers, traditional dragon, lion and unicorn dances will banish evil spirits and make way for good fortune and prosperity in The Year of the Tiger.

Sat 27 Feb

£

Newcastle Racecourse
High Gosforth Park
Newcastle
0191 236 2020
newcastle-racecourse.co.uk

M REGENT CENTRE
+ FREE shuttle bus



totesport.com EIDER CHASE

The *totesport.com* Eider Chase is one of the highlights of the jump racing calendar at Newcastle Racecourse. Seen as a rehearsal for the Grand National, the Eider Chase is a gruelling test of stamina, run over 4 miles and 25 fences.

Mon 1 - Sun 7 Mar

£

Venues across
NewcastleGateshead

For full information on
tickets and shows visit
[newcastle Gateshead
comedyfestival.com](http://newcastle Gateshead
comedyfestival.com)



NEWCASTLEGATESHEAD COMEDY FESTIVAL

The *NewcastleGateshead Comedy Festival* will present shows at The Sage Gateshead, As You Like It, The Cornerhouse and Northumbria University. The festival features many excellent stand-up comedians performing acclaimed one-hour shows, as well as an opening variety show and a closing show featuring some of the best comics from the North East.

Sat 13 Mar

£ / some events
are FREE

Various venues across
NewcastleGateshead
tynesideirish.com



ST PATRICK'S DAY CELEBRATIONS

This year's celebrations will bring live Irish bands and traditional Irish dancing to the centre of Newcastle with The Shamrock Stage at Grey's Monument on Saturday 13 March, organised by Tyneside Irish Cultural Society. Further Irish-themed music and events will take place in selected venues across Newcastle. For more information visit tynesideirish.com.

Sat 20 Mar

£

Newcastle Racecourse
High Gosforth Park
Newcastle
0191 236 2020
newcastle-racecourse.co.uk

M REGENT CENTRE
+ FREE shuttle bus



GUINNESS ST PATRICK'S DAY RACE MEETING

The *GUINNESS St Patrick's Day Race Meeting* is the penultimate jumps meeting of the season and is always a fantastic day out at Newcastle Racecourse. Enjoy live music from Granny Smith's Maggot, playing all your Irish favourites straight after racing in the Colonel Porter Bar.

Sat 20 March

FREE

Kielder Water
& Forest Park
Northumberland
01434 250 457
visitkielder.com



KIELDER LANTERN PARADE

A celebration of Northumberland culture; join in this large-scale, lantern-lit procession through Kielder Forest and down to the shores of Kielder Water where an extravagant water-based finale awaits you at dusk. There will also be a range of free workshops and activities during the day.

AV FESTIVAL 10 ENERGY

Fri 5 - Sun 14 Mar
£ / some events
are FREE

Various venues across
NewcastleGateshead,
Sunderland and
Middlesbrough
0191 227 5512
avfestival.co.uk

AV Festival is the UK's largest international festival of electronic arts, featuring visual art, music and film. The award-winning festival takes place for 10 days, spanning two weekends, across NewcastleGateshead, Sunderland and Middlesbrough.

The theme of this year's festival is energy.

From early morning until late into the night, leading artists from around the world explore energy and its ability to connect, transform, destroy and renew. The festival includes work made with live electricity, sparklers, giant light bulbs, underwater microphones, a church organ and levitating gold.

Bringing together culture, science, technology and the environment, the festival presents 20 exhibitions, 15 performances, 10 film screenings and special events at some of the North East's major cultural venues and landmark buildings.



Part of NewcastleGateshead's
world-class programme of festivals
and events developed by culture⁰

Image: artificiel, condemned_bulbes 2003

North Tyneside 10K

Road Race

Sun 4 Apr

£ to enter /

FREE to spectate

The Parks
Sports Centre
North Shields
0191 643 7409
northtyneside.gov.uk

M NORTH SHIELDS

Certainly a competitor for one of the most scenic 10k road races in the UK, this popular event begins at The Parks Sports Centre in North Shields and takes in the sights of Fish Quay, Tynemouth Priory and Castle, and a long stretch of coastline before finishing at St Mary's Lighthouse.

If you would like to participate in the *North Tyneside 10K Road Race*, request an entry form by calling 0191 643 7409 or email thomas.wilson@northtyneside.gov.uk

Runners travel from all over the UK to compete. To avoid disappointment, get your entry in quickly as there is a strict limit of 2,000 participants.

The entry fee for a UK Athletics Club member is £12 and a non-club member fee is £14. Only persons aged over 15 years are eligible to race.



What's New? **In the region**

Sat 30 Jan

£

The Sage Gateshead
St Mary's Square
Gateshead
0191 443 4661
thesagegateshead.org

M GATESHEAD

Q Q1 THE SAGE GATESHEAD
MAP REF E5

'OUTSIDE-IN' FESTIVAL

'*Outside-In*' is a brand new winter pop festival which brings you all the riotous fun of a pop festival but indoors, without the mud and not a welly in sight! Five hours of non-stop chart-topping music and the chance to get up close and personal to your favourite artists. It's a summer party to melt away the winter blues and Channel 4's T4 will be showing all the highlights so if you want to see yourself on TV make sure you turn up in your best bikinis and Bermudas. Life's a beach so dress accordingly! First names confirmed include Pixie Lott, N-Dubz, Tinchy Stryder, Taio Cruz, Alphabeat and Lostprophets.

The Outside-In Festival is brought to you by Whizzkid Entertainment and The Sage Gateshead and is supported by Northern Film and Media, One North East and forms part of NewcastleGateshead's world-class programme of festival and events developed by culture¹⁰.

Tues 16 Feb

FREE

Eldon Square
Newcastle
eldon-square.co.uk

M HAYMARKET

Q Q2 MONUMENT
MAP REF C2

ELDON SQUARE ST ANDREW'S WAY

Eldon Square celebrates the culmination of a £170 million regeneration programme, marked by the opening of a brand new mall, St Andrew's Way. The centre will be anchored by a four-storey Debenhams and 25 new shops with flagship stores for River Island, New Look and Topshop. A week-long programme of events and promotions is being planned for the opening week (see p10).

Metrocentre Qube
Metrocentre
Gateshead
0191 493 0219 or
0191 460 5299
metrocentre.uk.com

METROCENTRE QUBE

A brand new dimension in dining and entertainment, Metrocentre Qube includes five great restaurants and a new Odeon cinema complete with IMAX theatre. The Namco Entertainment Centre features 18 ten-pin bowling lanes, the fastest dodgem track in Europe, a children's soft play area, activity machines, electronic games and a fully licensed bar screening Sky Sports. Be sure to check it out on your next visit!

SideTV
Available online
at sidetv.net

SIDETV

An exciting new venture from the Amber film and photography collective. Amber's work is rooted in the lives and landscapes of working class and marginalised communities in the North East. SideTV was created to discover a sense of who these communities are, what they care about and what they enjoy. SideTV is a free, internet, on-demand TV station, webcasting to the world from Newcastle's Quayside.

Ocean Lounge
30 - 32 Ocean Road
South Shields
0191 497 5504

M SOUTH SHIELDS

OCEAN LOUNGE

A totally new concept in restaurant dining comes to South Shields with a lively atmosphere and stylish surroundings. Churrasco blends a fusion of South American and European cuisine where meat and vegetables are seasoned and cooked on skewers over the grill then brought to the table where sizzling portions are sliced onto the plate. The Brazilian style of grill is available during the evening; during the day Ocean Lounge is open for tapas, paninis, pastries and coffee.

The Central Hotel
Half Moon Lane
Gateshead
headofsteam.co.uk

M GATESHEAD

Q 01 GATESHEAD
MAP REF E6

THE CENTRAL HOTEL

The Head Of Steam Ltd has purchased one of the most iconic buildings in Gateshead - The Central Hotel, which is located in the up-and-coming Bridges conservation area of North Gateshead, adjacent to the Tyne Bridge approach. The building will be returned to its former glory with a fantastic new roof-top garden terrace overlooking the Quayside.

Saints Hotel
Friar House
Clavering Place
Newcastle
0191 241 3201
saintshotels.com

M CENTRAL STATION

Q 01 CENTRAL STATION
MAP REF C5

SAINTS HOTEL

The Georgian doors at Friar House are soon to be unlocked to reveal the final stages of Saints Hotel Newcastle. The fabulous boutique hotel will consist of 11 suites, a modern wine bar, bistro, café and pantry. As well as breakfast, light lunches and a range of afternoon teas and coffees, the café (which opens in December) is also running as a wine bar. The hotel features a walled front garden which provides fantastic alfresco dining during the summer months.

Newcastle Gateshead



 Visitor Information Centre

 Travelshop

 Railway Station

 Metro Station

 QuayLink buses

 CentreLink buses

 Bus Interchange

 Taxis



PERFORMANCE

Thurs 7 & Sat 9 Jan

£

The Sage Gateshead
St Mary's Square
Gateshead
0191 443 4661
thesagegateshead.org

M GATESHEAD

Q 01 THE SAGE GATESHEAD
MAP REF E5



CHINESE STATE CIRCUS MULAN

From the land of legends and warrior monks comes the incredible new Chinese State Circus production of *Mulan*. Featuring the amazing Shaolin Warriors in a breathtaking fusion of acrobatics, musicianship, martial arts and dazzling circus skills.

Tues 26 - Sun 31 Jan

£

Sunderland Empire
High Street West
Sunderland
0844 847 2499
sunderlandempire.org.uk

M PARK LANE



STOMP

The international smash hit *STOMP* returns with brand new routines, choreography and music. *STOMP* has no words but everyone can understand it. It has little or no melody in the traditional sense, so it doesn't matter if your taste in music is jazz, classical, dance or pop. *STOMP* is about rhythm, and everyone knows rhythm, if only from the beating of their own heart - it is the basis of all music.

Thurs 28 Jan

£

Live Theatre
Broad Chare
Quayside
Newcastle
0191 232 1232
live.org.uk

M MONUMENT / MANORS

Q 02 LAW COURTS
MAP REF E4



NO LIMITS THEATRE CUCKOO JACK

Son of a clockmaker, Jack left home early, drawn towards the river and its ever changing tides. Jack proves to have a rare talent for finding things, trinkets, treasures and people - alive or dead. Jack's a man of few words, in fact, now I think about it he doesn't speak at all. Fusing theatre, music and design, follow Jack as the secrets he has kept catches up with him and decide if he's a brave man or a liar and a cheat.

Fri 29 - Sat 30 Jan

£

Northern Stage
Barras Bridge
Newcastle
0191 230 5151
northernstage.co.uk

M HAYMARKET

Q 02 HAYMARKET
MAP REF C1



balletLORENT BLOOD SWEAT & TEARS

Blood Sweat & Tears, a new work by choreographer Liv Lorent, follows the extraordinary transformations of a young couple as they learn to cope with becoming a family. The performance explores the power, tenderness and unconditional love involved in caring for a newborn baby, and the resulting test on the romantic relationship between a man and a woman.

Weds 3 - Sat 6 Feb

£

Theatre Royal
Grey Street
Newcastle
0844 811 21 21
theatreroyal.co.uk

M MONUMENT**Q** Q1/Q2 THEATRE ROYAL
MAP REF C3

Scottish Ballet Orchestra **THE NUTCRACKER**

A magical dolls house, an evil governess, and a nutcracker doll who may just be a handsome prince in disguise - this winter, prepare to enter a magical new world. This vivid retelling of the famous story features stunning sets and costumes, breathtaking choreography, Tchaikovsky's sumptuous score and the phenomenally talented, award-winning dancers of Scotland's national dance company.

Weds 3 - Sat 13 Feb

£

The Customs House
Mill Dam
South Shields
0191 454 1234
customshouse.co.uk

M SOUTH SHIELDS

THE MACHINE GUNNERS

Robert Westall's book *The Machine Gunners* was published in 1975 and won the Carnegie Medal for Children's Literature. It became a best-seller and a classic TV series. The musical was first staged at the Customs House in 1998 and then spent a month at the Edinburgh Festival where it received rave reviews. *The Machine Gunners* tells the story of a group of teenagers growing up on Tyneside during the Blitz.

Thurs 11 Feb, 7pm

£

Gateshead Old
Town Hall
West Street
Gateshead
0191 433 6965
gateshead.gov.uk

M GATESHEAD**Q** Q1 GATESHEAD
MAP REF E6

HALF MOON YOUNG PEOPLE'S THEATRE **BEGIN/END**

Two inseparable friends breathe freedom and possibility during two heady years of adventure, but something unspoken grows between them. As relationships form and dissolve, it is the beginning and the end of everything. A multimedia performance featuring VJing and a contemporary soundtrack by one of Britain's freshest new composers.

Thurs 11 Feb, 8pm

£

PLAYHOUSE Whitley Bay
Marine Avenue
Whitley Bay
0844 277 2771
playhousewhitleybay.
co.uk

M MONKSEATON

CHRIS ADDISON

By popular demand, at last Mr. Chris Addison, of BAFTA Award-winning comedy *The Thick of It*, *In The Loop*, *Skins* and *Lab Rats* is back with a brand new show of his critically acclaimed stand-up.

PERFORMANCE

Sat 27 Feb

£

Journal Tyne Theatre
Westgate Road
Newcastle
0844 493 9999
thejournaltynetheatre.co.uk

M CENTRAL STATION

Q Q1 CENTRAL STATION
MAP REF A4



MOST HAUNTED LIVE!

The *Most Haunted* team has explored some of the spookiest locations in the UK and America. Now on stage the *Most Haunted* team of mediums and ghost hunters brings a supernatural thrill-fest to The Journal Tyne Theatre. The team will report on paranormal activity, show unseen film footage, and attempt to explore paranormal or scientific explanations for any phenomena that occurs.

Weds 3 & Sat 6 Mar

£

Theatre Royal
Grey Street
Newcastle
0844 811 2121
theatreroyal.co.uk

M MONUMENT

Q Q1/Q2 THEATRE ROYAL
MAP REF C3



OPERA NORTH RUDDIGORE

When mild-mannered Robin Oakapple is revealed as the villainous Sir Ruthven Murgatroyd, inheritor of the curse of Ruddigore (he must commit a crime a day), his romance with the faultlessly virtuous Rose Maybud looks doomed. But his troubles have only just begun. A witty burlesque melodrama with a distinctive Opera North approach. Sung in English.

Sat 6 - Sat 27 Mar

£

Northern Stage
Barras Bridge
Newcastle
0191 230 5151
northernstage.co.uk

M HAYMARKET

Q Q2 HAYMARKET
MAP REF C1



OH WHAT A LOVELY WAR!

A madcap orchestra of musicians, dancers, singers and clowns come armed with musical ingenuity, bawdy squaddie humour and a collection of well-known favourites including *Pack Up Your Troubles* and *Keep The Home Fires Burning*. The emotional punch of *Birdsong* meets the biting satire of *Blackadder* in fun-filled storytelling with a tough, dark heart.

Weds 17 - Sat 20 Mar

£

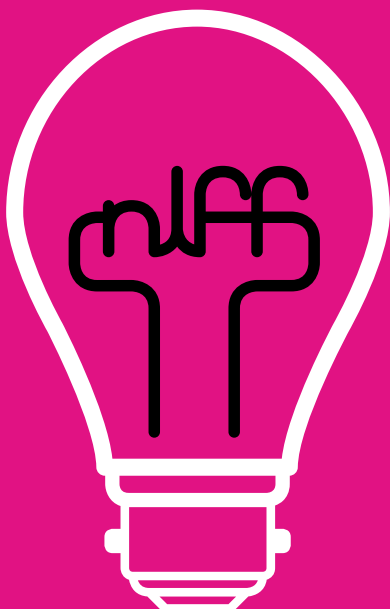
Sunderland Empire
High Street West
Sunderland
0844 847 2499
sunderlandempire.org.uk

M PARK LANE



Birmingham Royal Ballet THE SLEEPING BEAUTY

On her christening day princess Aurora is cursed by the wicked fairy Carabosse: one day the princess will prick her finger on a spindle and die. But the kind Lilac Fairy tempers the curse so the princess will instead fall asleep for 100 years. Set to a classical score by Tchaikovsky, *The Sleeping Beauty* is considered one of the greatest ballets from Imperial Russia.



Northern Lights

Film Festival

Igniting Ideas

Sat 20 - Sun 28 Mar
£ / some events are
FREE

Various venues across
the North East
0191 227 5522
niff.co.uk

Northern Lights Film Festival, telling tales,
sparking connections.

This festival brings the most mischievous,
proud and determined international film
makers and audiences together to scratch
beneath the shiny veneer of film making
to reveal the stories, truths, lies and luck
behind the films.

Be a part of it, visit niff.co.uk, tell your
tales and make some new connections.

Join other makers, showers, watchers,
talkers and film stalkers for fun and
engaging screenings, workshops,
intimate chats and lively events.

**Keep watching niff.co.uk for
details as they unfold...**



Part of NewcastleGateshead's
world-class programme of festivals
and events developed by culture¹⁰

Supported by Northern Film & Media and Northern Rock Foundation

Newcastle

Sciencefest

Fri 12 - Sun 21 Mar
£ / some events are
FREE

Venues across
Newcastle
0191 243 8232
NewcastleScienceFest.com

Let your imagination come out to play at ScienceFest. Learn how to speak Chimpanzee, race power tools, challenge the Rubik's Cube solving robot and see how many of your friends and family can fit inside a bubble.

Maker Faire - the world's premiere event for DIY technology and craft - will again be returning to the UK as part of ScienceFest's opening weekend (Sat 13 + Sun 14). This interactive event features cool robots, clever gadgets, garden shed inventions, knitted wonders, the occasional fireball, and much more!

And when the sun goes down, ScienceFest After Dark will cater exclusively for adults with some very special events including the Science of Good Sex, a late night opening of Life Science Centre, and Bitter and Twisted - a cocktail evening exploring taste sensations with Jack Cains.



10 days, 2 weekends, 100 events:
12-21 March 2010.
NewcastleScienceFest.com

NEWCASTLE
SCIENCE
FEST '10
12-21 MARCH

Life of Sunderland:

Black Cats Forever!

Sat 9 Jan - Sun 7 Mar

FREE

National Glass Centre
Liberty Way
Sunderland
0191 515 5555
nationalglasscentre.com

M ST PETERS

World Cup fever will grip us this year and so Black Cats Forever! will celebrate Sunderland AFC, its fans, its home and its stars! Part of a series of exhibitions presented by Sunderland Echo and National Glass Centre describing the people, events, passions and tragedies of life in Sunderland over the past 70 years, including photography and newspaper stories from the Echo archives.

Black Cats Forever! is part of Life of Sunderland, a programme of exhibitions curated by National Glass Centre looking at the history, future and community of Sunderland.



Image: 1973 FA Cup Homecoming
courtesy of The Sunderland Echo

MUSIC

Weds 20 Jan

£

The Sage Gateshead
St Mary's Square
Gateshead
0191 443 4661
thesagegateshead.org

M GATESHEAD

Q Q1 THE SAGE GATESHEAD
MAP REF E5



FRITH PIANO QUARTET

A Newcastle Chamber Music Society concert, Benjamin Frith's Piano Quartet performance features a tribute to Mendelssohn with a performance of his Piano Quartet in B Minor, plus Schönberg's String Trio, composed in 1946 and perhaps his most passionate chamber music work. Finally, Schumann's glorious piano quartet, one of his greatest chamber works.

Tues 2 Feb

£

Corner House Hotel
Heaton Road
Newcastle
0191 265 9602
jazznortheast.co.uk

M CHILLINGHAM ROAD



JAZZ NORTH EAST ALYN COSKER TRIO + SEAMUS BLAKE

The Alyn Cosker Trio features Alyn Cosker, one of the most dynamic drummers on the UK scene, Michael Janisch and David Dunsmuir, a sensationally talented guitarist of Scottish roots. Seamus Blake, an award-winning New York saxophonist, joins the trio for a guest appearance. Expect fierce contemporary jazz at its finest.

Weds 3 Feb, 7:30pm

£

The Sage Gateshead
St Mary's Square
Gateshead
0191 443 4661
thesagegateshead.org

M GATESHEAD

Q Q1 THE SAGE GATESHEAD
MAP REF E5



TRANSATLANTIC SESSIONS

See some of the finest folk and roots artists from America, Scotland and Ireland including: Dan Tyminski, lynchpin of Alison Krauss's Union Station and George Clooney's singing voice in *O Brother, Where Art Thou?*; Nickel Creek's Sara Watkins; old-time fiddler Bruce Molsky; Capercaillie's Karen Matheson; former Fairground Attraction singer Eddi Reader and many more!

Weds 10 Feb

£

The Cluny
36 Lime Street
Ouseburn
Newcastle
0191 230 4474 / 4475
headofsteam.co.uk

M BYKER / MANORS

Q Q2 BYKER BANK
MAP REF G2



JON ALLEN

After selling more than 20,000 downloads of the track *Going Home*, when it featured on a Land Rover commercial, Jon Allen has a strong and supportive fan-base in the UK. He's gained extensive support from Radio 2, with *In Your Light* achieving a much-coveted A-List slot. His debut album *Dead Man's Suit* reveals a timeless collection of beautifully crafted songs and the emergence of an important new English talent.

Fri 19 Feb, 8pm

£

Gateshead Old
Town Hall
West Street
Gateshead
0191 433 6965
gateshead.gov.uk

M GATESHEAD**Q** Q1 GATESHEAD
MAP REF E7**JOHNNY
DICKINSON****+ GYPSY DAVE SMITH**

A big favourite with The Jumpin' Hot Club since 1990, Northumbrian slide guitarist and singer Johnny Dickinson pays his annual visit. Johnny lends his exceptional picking and slide skills, aligned with seasoned, understated vocals, to a hybrid folk/blues sound that echoes the likes of Martin Simpson and Kelly Joe Phelps. Gypsy Dave Smith supports.

Thurs 4 Mar

£

Metro Radio Arena
Arena Way
Newcastle
0844 493 6666 / 4567
metroradioarena.co.uk

M CENTRAL STATION**Q** Q1 CENTRAL STATION
MAP REF A7**LADY GAGA****THE MONSTER BALL**

Following phenomenal success at Metro Radio Arena supporting The Pussycat Dolls in January 2009, the extraordinary Lady Gaga returns to Newcastle to fascinate and delight audiences in her headlining tour. *The Monster Ball* will be the first chance for fans to hear live the songs from her revamped album, *The Fame Monster*.

**Wed 10, Fri 26,
Sat 27 Mar**

£

Metro Radio Arena
Arena Way
Newcastle
0844 493 6666 / 4567
metroradioarena.co.uk

M CENTRAL STATION**Q** Q1 CENTRAL STATION
MAP REF A7**THE X FACTOR
LIVE TOUR 2010**

The 2010 tour promises to be packed full of special guests including the outstanding North East born Joe McElderry. This year's tour features a special matinee performance on Saturday 27 March, giving the perfect opportunity for younger and older fans alike to see their favourite finalists! With last year's tour a sell-out, tickets are in huge demand, so get yours early!

Fri 19 Mar, 8pm

£

Gateshead Old
Town Hall
West Street
Gateshead
0191 433 6965
gateshead.gov.uk

M GATESHEAD**Q** Q1 GATESHEAD
MAP REF E7**KAISO & STEEL**

Kaiso & Steel is a creative collaboration between two steel pan players from the UK and a Trinidadian singer/musician/storyteller from Canada. Be entertained and informed about the Kings of Calypso and their music. Sometimes controversial, sometimes amusing, always lively and uplifting! Using music and spoken word this production tells the story of the development of calypso music and steel pans.

South Tyneside International

Magic Festival

Weds 10 - Sun 14 Mar
£

The Customs House
Mill Dam
South Shields
0191 454 1234
customshouse.co.uk

M SOUTH SHIELDS

Be prepared to be mesmerized as some of the finest magicians from around the world take to the stage for the return of this popular festival. Be sure not to miss the Family Magic Extravaganza on Wednesday 10 March and the two Gala Shows on Friday 12 and Saturday 13 March, all taking place at The Customs House.



until Sun 7 Feb
FREE

BALTIC Centre for
Contemporary Art
Gateshead Quays
0191 478 1810
balticmill.com

M GATESHEAD

Q 01 BALTIC SQUARE
MAP REF F4



DAMIEN HIRST PHARMACY

In conjunction with Tate Connects, an initiative established in 2008 to develop partnerships between Tate and other UK galleries, BALTIC presents Damien Hirst's major 1992 work *Pharmacy*.

Damien Hirst Pharmacy 1992 (c) Tate, London 2009

until Sat 13 Feb
FREE

Northern Gallery for
Contemporary Art
City Library and Arts
Centre
28-30 Fawcett Street
Sunderland
0191 561 8407
design-event.co.uk

M SUNDERLAND



THINK TANK A MARKETPLACE OF IDEAS

'Think tanks' have created many of the ideas which go on to shape our lives. Their research and proposals frequently become the party policy of tomorrow and affect us all. Here, they ask us to think about our shared future, and imagine how we might, together, create a better society. *Think Tank* is part of Design Event 09 (DE09), the North East's annual design festival.

until Sun 21 Feb
FREE

National Glass Centre
Liberty Way
Sunderland
0191 515 5555
nationalglasscentre.com

M ST PETERS



VÁCLAV CIGLER: LIGHT AND WATER AS A PRINCIPLE

Artist Václav Cigler is revered for the optical and refractive qualities of his conceptual sculptural works and the virtual spaces they create. Inspired by water, light, reflections, space and the individual, Cigler's portfolio includes small, intimate glass objects as well as architectural and large sculptural pieces. Co-curated by the National Glass Centre and the artist's studio.

until Sun 30 May
FREE

Discovery Museum
Blandford Square
Newcastle
0191 277 2199
twmuseums.org.uk/
discovery

M CENTRAL STATION

Q 01 CENTRAL STATION
MAP REF A4



SWANS OF THE TYNE

An exhibition exploring the history of one of the best known shipbuilding companies in the UK. Swan Hunter was responsible for some of the greatest ships of the 20th century. The exhibition will draw upon photographs, technical drawings, film and video footage of Swan Hunter, as well as recorded memories of people who either worked at or were in some way connected with the shipyard.

EXHIBITIONS

until Sun 26 Sep

FREE

Laing Art Gallery
New Bridge Street
Newcastle
0191 232 7734
twmuseums.org.uk/laing

M MONUMENT

Q Q2 JOHN DOBSON ST
MAP REF D3



NEWCASTLE REINVENTED: VIEWS OVER THE AGES

Watercolours and drawings spanning more than 200 years of watercolour celebrate the heritage and renewal of Newcastle. The exhibition includes scenes of the building of the city's stone castle in the 12th century, views of the quayside and cathedral and many scenes which are still recognisable today.

Image: Tyne Bridges at Night (1966) by Nerys Ann Johnson

Fri 8 Jan - Fri 19 Feb

FREE

University Gallery
Northumbria University
Sandyford Road
Newcastle
0191 227 4424
northumbria.ac.uk

M HAYMARKET

Q Q2 HAYMARKET
MAP REF D1



JANE BOWN: 100 PORTRAITS

Jane Bown has been taking portraits for The Observer newspaper since 1949 and in that time has photographed everyone from Bertrand Russell to The Beatles and Samuel Beckett to The Queen. Working almost exclusively in black and white with an absolute economy of means, her portraits are immediately recognisable and many have become classics of the genre.

Image: Mick Jagger ©Jane Bown

Sat 23 Jan - Sun 27 Jun

FREE

Discovery Museum
Blandford Square
Newcastle
0191 277 2199
twmuseums.org.uk/
discovery

M CENTRAL STATION

Q Q1 CENTRAL STATION
MAP REF A4



COLLINGWOOD A NORTHUMBRIAN ABROAD

An exhibition to commemorate the 200th anniversary of Admiral Lord Collingwood's death at sea on 7 March 1810. Using objects, paintings and extracts from his letters it explores not only Collingwood's long naval career away from his home but also the influence of his lifelong love of Northumberland and the friends and family he left behind. Part of a wider programme of 2010 Collingwood celebrations

Fri 29 Jan -
Sun 9 May

FREE

Sunderland Museum &
Winter Gardens
Burdon Road
Sunderland
0191 553 2323
twmuseums.org.uk/
sunderland

M SUNDERLAND



CHINA: JOURNEY TO THE EAST

China: Journey to the East is a major exhibition from the British Museum, revealing the compelling story of one of the world's most important civilizations. Immerse yourself in 3,000 years of Chinese history and culture and experience the sights, sounds and colours of China as you discover captivating objects, both ancient and modern.

Image: © The Trustees of The British Museum

Sat 6 Feb -
Sun 18 Apr

FREE

Laing Art Gallery
New Bridge Street
Newcastle
0191 232 7734
twmuseums.org.uk/laing

M MONUMENT

Q Q2 JOHN DOBSON ST
MAP REF D3



BEATLES TO BOWIE: THE 60s EXPOSED

Beatles to Bowie explores the leading pop music personalities who helped create 'Swinging London' in the 1960s. Bringing together 150 photographs, together with a range of memorabilia, the exhibition evocatively illustrates how image, music, fashion and performance combined to make these musicians the leading icons of their time.

Sat 6 Feb -
Mon 3 May

£

Woodhorn Museum,
Archive and
Country Park
Ashington
Northumberland
01670 528 080
experiencewoodhorn.com



BBC WALKING WITH DINOSAURS

Dinosaurs last roamed the planet 65 million years ago, until the BBC's award-winning TV series, *Walking with Dinosaurs*, brought these remarkable creatures 'back to life'. This exhibition explores the science and technology behind the series. It will reveal more about dinosaurs and their world, and will enable visitors to 'walk with dinosaurs' through blue screen technology.

Sat 27 Feb -
Sun 16 May

FREE

South Shields Museum
& Art Gallery
Ocean Road
South Shields
0191 456 8740
twmuseums.org.uk/
southshields

M SOUTH SHIELDS



SPACE AGE: EXPLORATION, DESIGN AND POPULAR CULTURE

This major exhibition from the V&A Museum of Childhood explores people's fascination with space and how it has influenced popular culture from comics and toys to film, design and merchandising. Look out for a special opening on Saturday 27 February and a fantastic supporting events programme throughout the exhibition!

Image: 3 robot toys, Japan, 1950s and 1960s, Lithographed tin plates, V&A Museum of Childhood Collection.

Fri 5 Mar -
Sun 16 May

FREE

BALTIC Centre for
Contemporary Art
Gateshead Quays
0191 478 1810
balticmill.com

M GATESHEAD

Q Q1 BALTIC SQUARE
MAP REF F4



JENNY HOLZER

BALTIC presents the first large exhibition in a UK gallery of American artist Jenny Holzer. On view are paintings and sculptures, as well as her famous LED installations, containing compelling combinations of overwhelming visual effects and memorable texts of a poetic, socio-critical, and political nature.

Image: Jenny Holzer, *Monument* (detail), 2008.
© Jenny Holzer, member Artists Rights Society (ARS), NY.
Photo: Vassilij Gureev

LISTINGS

CURRENT

until Sun 17 Jan

MAMMA MIA!

Metro Radio Arena, p4

until Sun 7 Feb

**DAMIEN HIRST
PHARMACY**

BALTIC Centre for
Contemporary Art, p27

until Sat 13 Feb

**THINK TANK
A MARKETPLACE
OF IDEAS**

Northern Gallery for
Contemporary Art, p27

until Sun 21 Feb

**VÁCLAV CIGLER:
LIGHT AND WATER
AS A PRINCIPLE**

National Glass Centre, p27

until Sun 21 Feb

SKATING @ LIFE

Times Square, p9

until March

**FAREWELL TO
LUCKY SPOT**

Belsay Hall, Castle and
Gardens, p9

until Sun 30 May

SWANS OF THE TYNE

People's Gallery,
Discovery Museum, p27

until Sun 26 Sept

**NEWCASTLE
REINVENTED**

Laing Art Gallery, p28

JANUARY

**Throughout Jan, Feb
and Mar**

TIMEQUEST

Arbeia Roman Fort, p6

Thurs 7 & Sat 9 Jan

**CHINESE STATE
CIRCUS - MULAN**

The Sage Gateshead, p18

Fri 8 Jan - Fri 19 Feb

**JANE BOWN: 100
PORTRAITS**

University Gallery, p28

Sat 9 - Sun 17 Jan

FISH STOCK-TAKING

Blue Reef Aquarium, p6

Sat 9 Jan - Fri 19 Feb

**INSPIRE
NORTHUMBERLAND
EXPERIMENTS IN
FASHION**

The Alnwick Garden, p9

Sat 9 Jan - Sun 7 Mar

**LIFE OF SUNDERLAND:
BLACK CATS
FOREVER!**

National Glass Centre, p23

Sun 10 Jan

PIER TO PIER WALK

Roker Pier to South
Shields Pier, p9

Weds 20 Jan

**FRITH'S PIANO
QUARTET**

The Sage Gateshead, p24

Fri 22 - Sun 31 Jan

**SHINE 2010 ARTS
FESTIVAL**

Mowbray Park and
Sunnyside Gardens, p10

**Sat 23 Jan - Sun
27 Jun**

**COLLINGWOOD
A NORTHUMBRIAN
ABROAD**

Discovery Museum, p28

Tues 26 - Sun 31 Jan

STOMP

Sunderland Empire, p18

Thurs 28 Jan

**NO LIMITS THEATRE
CUCKOO JACK**

Live Theatre, p18

Fri 29 - Sat 30 Jan

**balletLORENT
BLOOD SWEAT**

& TEARS
Northern Stage, p18

**Fri 29 Jan -
Sun 9 May**

**CHINA: JOURNEY
TO THE EAST**

Sunderland Museum &
Winter Gardens, p28

Sat 30 Jan

OUTSIDE-IN FESTIVAL

The Sage Gateshead, p14

FEBRUARY

Tues 2 Feb

**JAZZ NORTH EAST
ALYN COSKER TRIO +
SEAMUS BLAKE**

Corner House Hotel, p24

Weds 3 Feb

**TRANSATLANTIC
SESSIONS**

The Sage Gateshead, p24

Weds 3 - Sat 6 Feb

**SCOTTISH BALLET
ORCHESTRA
THE NUTCRACKER**

Theatre Royal, p19

Weds 3 - Sat 13 Feb

**THE MACHINE
GUNNERS**

The Customs House, p19

**Sat 6 Feb - Sun 18
Apr**

**BEATLES TO BOWIE:
THE 60s EXPOSED**

Laing Art Gallery, p29

Sat 6 Feb - Mon 3 May

**BBC WALKING
WITH DINOSAURS**

Woodhorn Museum,
Archive and Country
Park, p29

Weds 10 Feb

JON ALLEN

The Cluny, p24

Thurs 11 Feb

**HALF MOON YOUNG
PEOPLE'S THEATRE
BEGIN/END**

Gateshead Old Town
Hall, p19

Thurs 11 Feb

CHRIS ADDISON

PLAYHOUSE Whitley
Bay, p19

Sat 13 - Sat 20 Feb

**ELDON SQUARE
FESTIVAL**

Eldon Square, p10

Sat 13 - Sun 21 Feb
HALF TERM FUN
AT LIFE SLIME
WORKSHOPS
 Life Science Centre, p6

Sat 13 Feb -
Winter '10
GREEN DROPS AND
MOONSQUIRTERS
 Seven Stories, the
 Centre for Children's
 Books, p6

Sun 14 Feb
CHINESE NEW YEAR
 China Town, Newcastle,
 p10

Mon 15 - Fri 19 Feb
DRAGONS OF THE
DARK AGES
 Bede's World, p7

Tues 16 Feb
ELDON SQUARE
ST ANDREW'S WAY
 Eldon Square, p14

Fri 19 Feb
JOHNNY DICKINSON
+ GYPSY DAVE SMITH
 Gateshead Old Town
 Hall, p25

Tues 23 - Sat 27 Feb
GEORGE'S
MARVELLOUS
MEDICINE
 PLAYHOUSE Whitley
 Bay, p7

Sat 27 Feb
MOST HAUNTED
LIVE!
 Journal Tyne Theatre,
 p20

Sat 27 Feb
TOTESPORT.COM
EIDER CHASE
 Newcastle Racecourse, p11

Sat 27 Feb -
Sun 16 May
SPACE AGE
EXPLORATION
 South Shields Museum &
 Art Gallery, p29

MARCH

Mon 1 - Sun 7 Mar
NEWCASTLEGATESHEAD
COMEDY FESTIVAL
 Venues across
 NewcastleGateshead, p11

Tues 2 Mar
PRE-SCHOOL DAY
AT LIFE
 Life Science Centre, p7

Weds 3 & Sat 6 Mar
OPERA NORTH
RUDDIGORE
 Theatre Royal, p20

Thurs 4 Mar
LADY GAGA
THE MONSTER BALL
 Metro Radio Arena, p25

Fri 5 - Sun 14 Mar
AV FESTIVAL 10:
ENERGY
 Across
 NewcastleGateshead,
 Sunderland and
 Middlesbrough, p12

Fri 5 Mar -
Sun 16 May
JENNY HOLZER
 BALTIC Centre for
 Contemporary Art, p29

Sat 6 - Sat 27 Mar
OH WHAT A
LOVELY WAR!
 Northern Stage, p20

Weds 10 Mar
THE X FACTOR UK
LIVE TOUR 2010
 Metro Radio Arena, p25

Weds 10 -
Sun 14 Mar
SOUTH TYNESIDE
INTERNATIONAL
MAGIC FESTIVAL
 The Customs House, p26

Fri 12 - Sun 21 Mar
NEWCASTLE
SCIENCEFEST
 Venues across
 NewcastleGateshead, p22

Sat 13 Mar
ST PATRICK'S DAY
CELEBRATIONS
 Venues across
 NewcastleGateshead, p11

Sat 13 Mar
ILLUMINATING
HADRIAN'S WALL
 Locations along Hadrian's
 Wall Path National Trail,
 Wallsend and Carlisle p5

Weds 17 -
Sat 20 Mar
BIRMINGHAM
ROYAL BALLET THE
SLEEPING BEAUTY
 Sunderland Empire, p20

Fri 19 Mar
KAISO & STEEL
 Gateshead Old Town
 Hall, p25

Sat 20 Mar
GUINNESS ST
PATRICK'S DAY
RACE MEETING
 Newcastle Racecourse, p11

Sat 20 Mar
KIELDER LANTERN
PARADE
 Kielder Water
 & Forest Park, p11

Sat 20 -
Sun 28 Mar
NORTHERN LIGHTS
FILM FESTIVAL
 Venues across the North
 East, p21

Sun 21 Mar
HORRIBLE SCIENCE
 Seven Stories, the
 Centre for Children's
 Books, p7

Fri 26 - Sun 28 Mar
GATESHEAD
INTERNATIONAL
JAZZ FESTIVAL
 The Sage Gateshead, p8

Sun 4 Apr
NORTH TYNESIDE
10K ROAD RACE
 The Parks Sports Centre,
 p13

WIN!

A FAMILY TICKET TO THE OPENING WEEKEND OF

extraOrdinary measures

A new contemporary arts exhibition at Belsay Hall,
Castle & Gardens. Saturday 1 May - Sunday 26 Sept 2010.
Visit www.NewcastleGateshead.com.
Entries must be completed by **Friday 23 April**.



ENGLISH HERITAGE
www.extraordinarymeasures.co.uk

Special Offers at NewcastleGateshead.com

Visit NewcastleGateshead.com to find out about special offers at attractions, restaurants, cafés, cultural venues, bars, shops and more. Offers include:

- FREE CHILD ENTRY AT CENTRE FOR LIFE
- FREE PUDDING AT STARTERS & PUDS
- HOSPITALITY PACKAGE AT NEWCASTLE RACECOURSE £25

For full details of these fantastic offers and many more, and to find out how to take advantage of them visit NewcastleGateshead.com/offers

This page is not a voucher

REGISTER ONLINE NOW AND WIN £200!

Register at NewcastleGateshead.com to receive monthly e-news detailing must-see events and special offers.

All new registrations will be entered into a quarterly draw to win £200.